

# **SUMMER IN THE GARDEN**

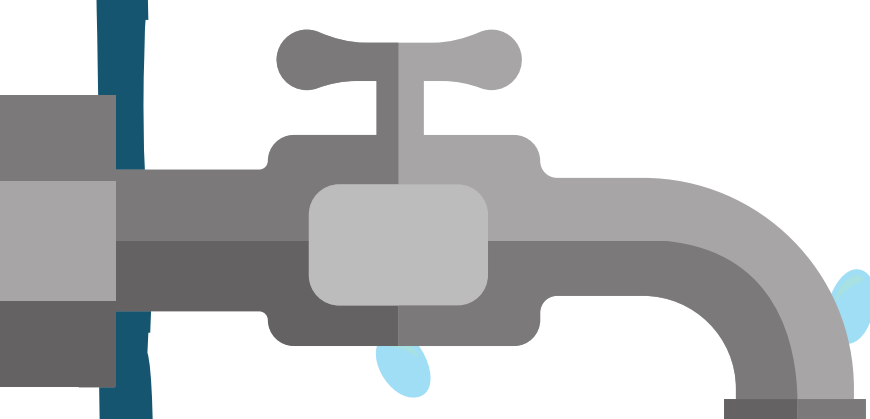
**Be wise not wasteful with our water**

**Use tank water (if you can)**

**Water in the cooler parts of the day**

**Mulch and shade your plot**

**Build soil life**

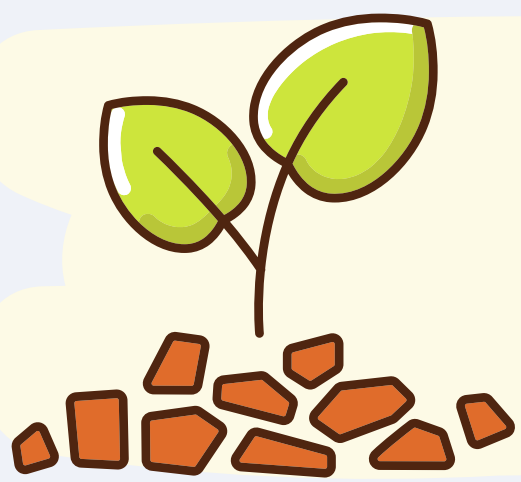


## **Rules for permanent water conservation**

**Measures in Queanbeyan City include:**

- do not use sprinklers outside the hours 6 pm to 9 am
- any watering by whatever means must not result in water pooling or runoff.

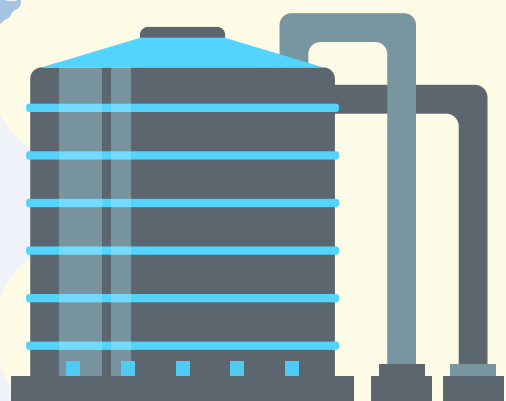
# Saving Water in the Garden



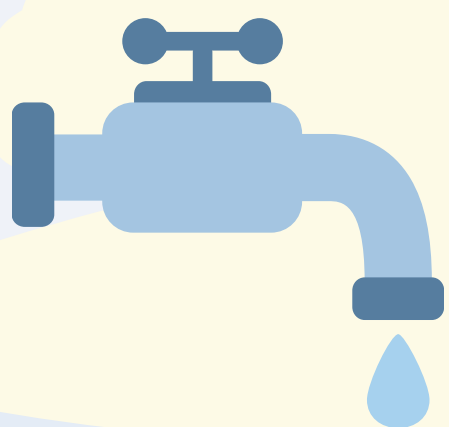
Mulch and Shade your plot



Water in the cool part of the day



use the tank water if you can



Use the tap water only for hand watering

